



Press Release

Date: 30th June 2025

Ref: PRS053.BTL

Bauer Technologies Secures Specialist Piling Works for Beckton DLR Depot Expansion

Bauer Technologies has secured the specialist piling contract for the expansion of the Beckton DLR Depot in East London, as part of Transport for London's (TfL) strategic upgrade of the Docklands Light Railway infrastructure.

The works, commissioned by Morgan Sindall Infrastructure on behalf of Transport for London (TfL), will support the depot's significant expansion, which is essential to accommodate the new B23 trains being introduced to meet increasing passenger demand across East London.

Bauer Technologies' scope of work involves the installation of 228 No 600mm diameter bearing piles of which 85 No. require to be installed through pre-bored 8m deep temporary liners to prevent contamination pathways and 334 No 750mm diameter secant wall piles, using its powerful BG30 rigs operating in CFA mode. Piles will be installed to depths of up to 26.5 metres, penetrating the dense Lambeth and Thanet Sand strata to support a new maintenance building. This structure will include a train-lifting road, craneage, and under-train access pits, all essential for both the final assembly and ongoing maintenance of the new train fleet.

Importantly, the project is located on the former Beckton Gas Works brownfield site. As such, additional environmental measures will be implemented throughout construction to mitigate risks associated with ground contamination and to ensure workforce safety.

Commenting on the project, Bauer Technologies Managing Directors John Theos and Paul Doyle said: "We are delighted to be supporting Morgan Sindall Infrastructure and Transport for London on this crucial infrastructure upgrade for London. The Beckton DLR Depot project is another example

of where Bauer's technical expertise in complex ground conditions and commitment to sustainable delivery can add real value."

The expansion also includes the extension of southern sidings and the creation of new northern sidings to accommodate 15 complete train units. Bauer Technologies will work efficiently and collaboratively to help meet the ambitious construction schedule.

-Ends-

NOTES FOR EDITORS:

About BAUER Technologies Ltd

Bauer Technologies is part of BAUER Spezialtiefbau GmbH, a global construction company specialising in complex and specialist foundation works, with its head office based in the town of Schrobenhausen, Germany.

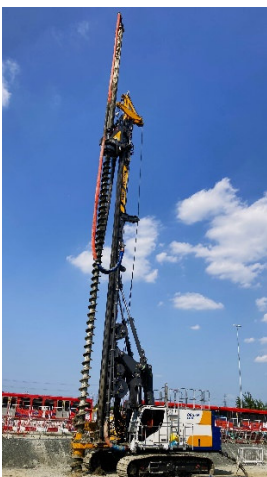
Bauer Technologies is the 100% owned UK subsidiary of BAUER Spezialtiefbau GmbH, the contracting company within the BAUER Group, and is the only geotechnical contractor in the world accredited with BRE BES 6001 sustainability certification [*November 2021*].

BAUER is known the world over as a leader in advanced deep foundation techniques. Whether it is the manufacture of specialised equipment, giving specific advice or performing the site works, BAUER is highly regarded world-wide by both consultants and contractors as the perfect partner in deep foundation projects.

For further information, please contact:

Debbie Darling, Business Development & Marketing Manager | Bauer Technologies

e: debbie.darling@bauertech.co.uk | m: 07894 809677



<Thumbnail image>